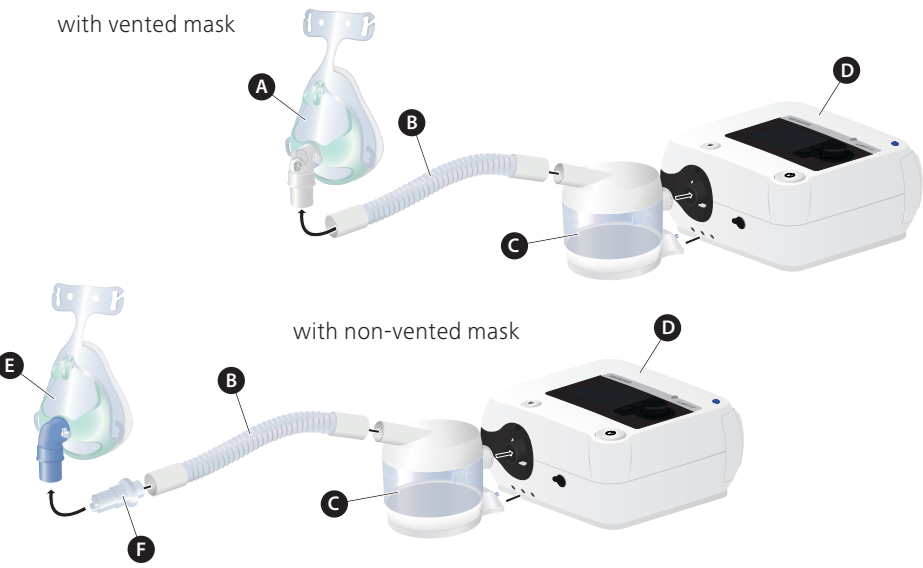
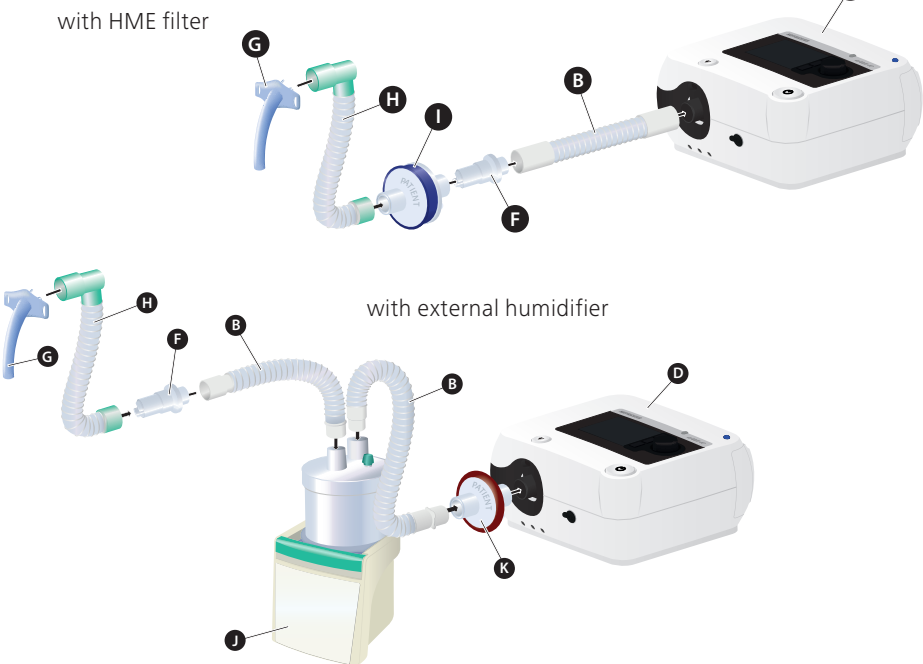


System design for non-invasive ventilation



System design for invasive ventilation



A Vented mask B Leakage tube C Humidifier AquaTREND uni D LAVI E non-vented mask
F Passive exhalation valve G Tracheal cannula H Catheter mount tube I HME filter
J External humidifier K Bacterial filter

LAVI Brief instruction

for device types LAVI 30 (9LV401) and LAVI 40 (9LV402)
as of device software 1.300

HOFFRICHTER
SERVONA RESPIRATORY CARE

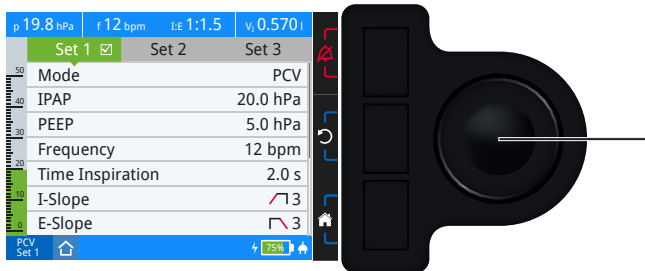
Operator controls



- Info LED
- HIGH
 - MEDIUM
 - LOW
 - Device is powering up or is running on line power
- Unlocking key
- Disconnect AquaTREND uni from LAVI
- on/off key
- Start ventilation: press briefly
 - Stop ventilation: press briefly + MFK
 - Switch device on: Press > 4 s
 - Switch device off: Press > 4 s

Softkeys
The softkeys can be assigned different functions:

- Alarm key
- Confirmation of all current alarms and no longer active alarms
 - Muting of alarm for 2 minutes
 - Cancel alarm sound suppression
- Escape key
- Exit current screen or selected parameter
 - Cancel action
- Heater key
- Switch the heater of the plug-in humidifier on and off
- Return to Home screen
- Error key
- Error list display



- Multifunction knob MFK
- Navigate in the menus
 - Set parameters
 - Other actions

©2019 HOFFRICHTER GmbH
All rights reserved.

The HOFFRICHTER GmbH reserves the right to change or replace the brief instruction without prior notice. Make sure that you are always using the most current version. Please obtain information about the current version by contacting your provider or by visiting our website at www.hoffrichter.de.

This document does not replace the user's manual. Make sure to read the user's manual!

HOFFRICHTER GmbH
Mettenheimer Straße 12/14
19061 Schwerin
Germany
Phone: +49 385 39925-0
Fax: +49 385 39925-25
E-Mail: info@hoffrichter.de
www.hoffrichter.de



LAVI Kurz ENG_2019-07-17_6.0

Description of device



- 1 Leakage tube system connection

2 FiO₂ sensor connection

3 Contact sockets humidifier

4 Oxygen connection

5 Oxygen output

6 DC connection

7 RS232 port
- 8 Remote alarm/ nurse call connection

9 Micro USB port

10 Ventilation slits

11 Filter cassette

12 Display

13 Info LED

14 Softkeys
- 15 Multifunction knob (MFK)

16 on/off key

17 Unlocking key humidifier

18 SD card slot

19 Rating plate

20 Battery compartment cover

Meaning of the icons in the pressure bar

Symbol	Meaning
	Setting of trigger lock „on“
	Trigger lock was triggered
	Spontaneous respiration detected The device has detected the patient's spontaneous respiration. This triggered the inspiration trigger. The icon remains visible during inspiration and vanishes with the start of expiration.
	Back-up frequency is active The device is working in PSV mode. The patient is not breathing spontaneously and is being ventilated at the set frequency.

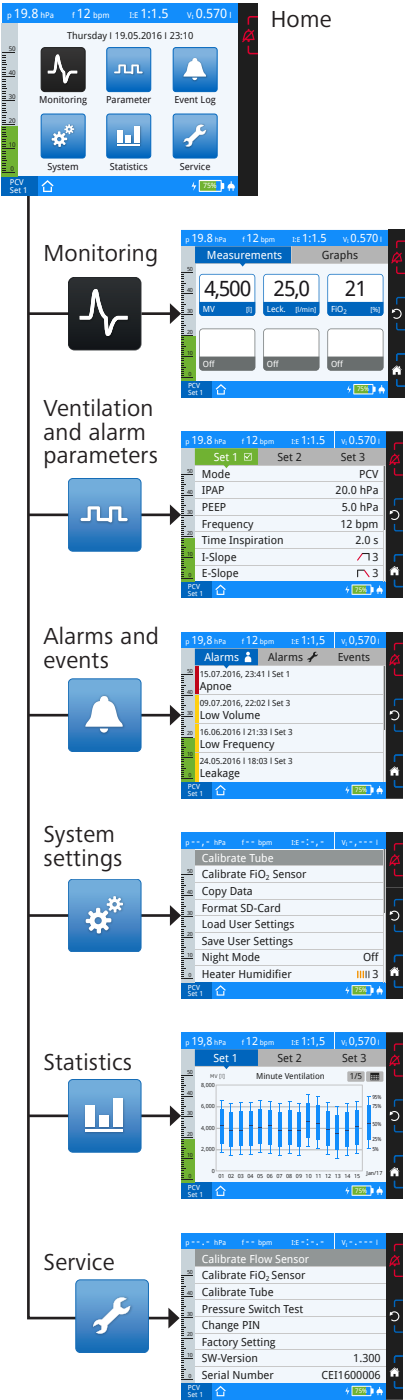
Meaning of the icons in the icon bar

Symbol	Meaning
	Clinic mode active
	Home mode active
	Alarm active
	Red: High priority
	Yellow: Medium priority
	Turquoise: Low priority
	Alarm inactive
	grey: inactive, regardless of the persistence of the alarm condition
	Audio alarm paused The alarm sound has been muted for 2 minutes.
	Counter for paused audio alarm Shows the remaining time for which the alarm sound will remain muted.
	Error detected On the home screen, press the error key to display the error message(s).
	PC connected via the Micro USB port, connection to “easySET” established
	FiO ₂ sensor connected
	FiO ₂ sensor connected, but not calibrated

Symbol	Meaning
	SD card is located in the device
	Humidifier
	Heater on
	Heater in standby mode
	Heater off
	Heater deactivated by battery operation
	Menu lock active The home and escape keys are deactivated and the MFK functions are restricted. It is not possible to access the menu.
	Internal battery is being charged
	Charge state of internal battery
	Green: ≥ 60 %
	Yellow: ≥ 20 % ¹ ... < 60 %
	Red: 0 % ... < 20 % ¹
	Replace the internal battery
	The device is powered by the power supply unit.

¹ The colour changes from yellow to red at 20% of the battery's rated value.

Menu structure



Activate a screen

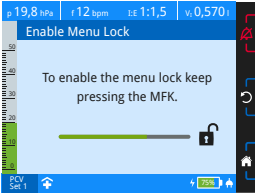
- Navigate to the desired screen icon by turning the MFK.

Selected screen icon
→ black

Unselected screen icon
→ blue
- To activate the selected screen, press the MFK.

Activate the menu lock

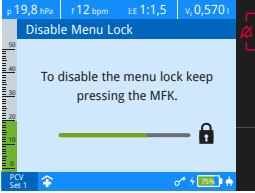
Hold the MFK in the home screen for longer than 1 second until the following window appears.



Keep the MFK pressed until the progress bar has completed and is displayed. Then release the MFK. The symbol will appear in the toolbar.

Deactivate the menu lock

Hold the MFK for more than 1 second until the following window appears.



Keep the MFK pressed until the progress bar has completed and is displayed. Then release the MFK. Select “Yes” and then press the MFK. The symbol will be hidden from the toolbar.