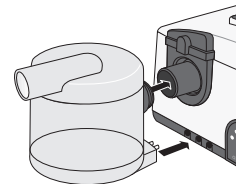
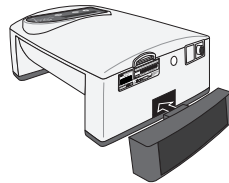


ACCESSORIES (OPTIONAL)

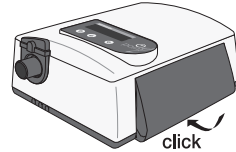
Therapy air humidifier
aquapoint 2



Filter system
filtersystempoint 2



Battery pack
powerpackpoint 2



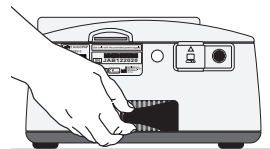
Please refer to the respective user's manual for further information.

CHANGING THE FILTER

Pull out the filter on the back of the device and replace it with a new or cleaned one.

NOTICE

Always use the device with the filter element inserted and clean the filter element regularly. If the filter element is heavily soiled or not inserted, this may damage the device and result in unpleasant odors.



Removing the filter

TECHNICAL DATA

power supply	
Main power	100 ... 240 V AC, 50 ... 60 Hz/ max. 1,0 A
DC power	24 V DC / max. 2.01 A

CLEANING

Cleaning the filter

1. Pull out the filter on the back of the device.
2. Clean the filter with mild soapy water (do not use any other agents), rinse the filter thoroughly with clear water and let the filter dry completely.

Cleaning the mask daily

1. Disconnect the mask with the exhalation valve from the therapy tube.
2. Use mild soapy water for cleaning (do not use any other agents), rinse thoroughly with clear water and let the mask dry completely, protected from direct sunlight.

Cleaning the therapy tube weekly

1. Disconnect the therapy tube from the device and the mask.
2. Use mild soapy water for cleaning, rinse the tube thoroughly with clear water and let the vertically suspended therapy tube dry completely.

Cleaning the device weekly

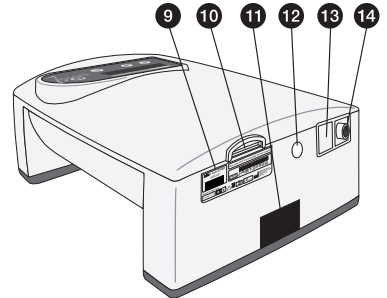
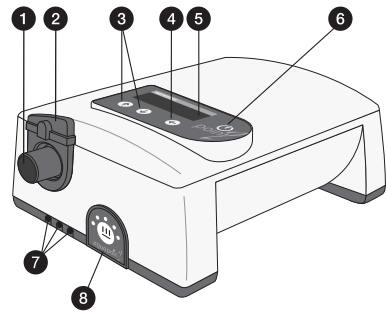
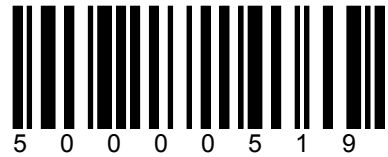
1. Unplug the mains plug.
2. Wipe the device with a cloth slightly moistened with soapy water and then rub dry.

Cleaning the headgear

If necessary, the headgear must be cleaned as follows:

1. Remove the headgear from the mask.
2. Clean the headgear in accordance with the information in the headgear manufacturer's user's manual.

 HOFFRICHTER GmbH
Mettenheimer Straße 12/14
19061 Schwerin
Germany
Telephone: +49 38539925-0
Fax: +49385 39925-25
Email: info@hoffrichter.de
www.hoffrichter.de



- 1 Therapy tube connection
- 2 Humidifier lock
- 3 Selection keys
- 4 Enter key
- 5 Display
- 6 ON/OFF key
- 7 Contact socket for humidifier (optional equipment variant)
- 8 Control panel for humidifier (optional equipment variant)
- 9 Rating plate
- 10 SD card slot
- 11 Filter or connection port for the *filtersystempoint 2*
- 12 Air inlet for baro sensor
- 13 RS232 interface
- 14 DC power connection

Brief instructions

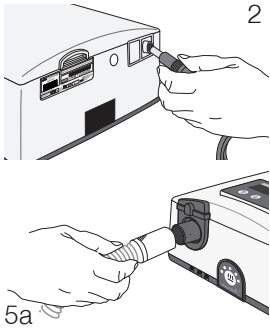
- point 2 CPAP • point 2 AUTOCPPAP •
point 2 BILEVEL S20 • point 2 BILEVEL ST20 •
point 2 BILEVEL ST25 • aquapoint 2 •
powerpackpoint 2

INSTALLATION REQUIREMENTS AND TRANSPORT

- Place the device near the bed on a firm, level surface.
- Ensure that the device is in a horizontal position, especially if it is connected to a humidifier.
- Never put the device on a cupboard shelf or under the bed.
- The device and accessories must not be exposed to direct sunlight.
- No objects must be placed on the device.
- When used as a mobile unit, it must be placed on a level, firm surface that has a raised edge so that the device cannot fall.
- The system with battery pack must never be stored or transported at ambient temperatures under -20°C or over +45°C (up to 3 months).
- The system without battery pack must never be stored or transported at ambient temperatures under -25°C or over +70°C .
- Due to electromagnetic interference, the respiratory therapy device must not be set up in the immediate vicinity of other devices whose emissions are not CE-compliant or where limit values are exceeded. If this is unavoidable, the respiratory therapy device must be monitored with respect to error-free and proper operation.

COMMISSIONING

1. Position the device according to the installation instructions (see user’s manual).
2. Connect the power supply to the device.
3. Connect the mains cable to the power supply and plug into a power socket.
4. The device starts up and displays a welcome text, device type and software version as well as the current number of therapy hours and then switches to the date and time display (standby).
5. Connect the therapy tube



- a) to the air outlet and
 - b) to the mask.
6. Calibrate the device as described in the user’s manual in the chapter „Calibration“.
 7. Put the mask on. If automatic mode has been selected, the device is turned on by the patient breathing. In manual mode, press the ON/OFF key to start the device.
 8. The device first of all runs (for the time selected by you for the mask test) at the prescribed pressure. You should now ensure the mask’s correct positioning to avoid potential leakages.
 9. Place the tube in such a way that it does not exert any strain on the mask when you lie down.
 10. Now breath deeply and calmly, just through your nose.

MENUS

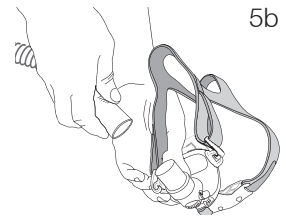
The point 2 has a standard and a complete menu. To switch between the menus press the enter key ⬅️. Then hold the selection keys ⬆️ and ⬇️ down at the same time for a few moments. The display shows one of the following messages:



SETTING PARAMETERS

The following 3 keys are available to set the parameters on the device:

- ⬆️ = Selection key
- ⬇️ = Selection key
- ⬅️ = Enter key



1. Press the enter key ⬅️ for approx. 1 second.
2. If necessary, select the standard or the complete menu.
3. Use the selection keys ⬆️ and ⬇️ to switch to the next parameter. A triangular symbol ▶ in front of a display row means that this row has been selected.
4. Press the enter key ⬅️ to change a selected parameter.
5. Use the selection keys ⬆️ and ⬇️ to set the desired value.
6. Confirm your setting by pressing the enter key ⬅️.

NOTICE
Some parameters are PIN code secured and may only be changed by the physician.

SWITCHING THE WAKE UP ALARM ON AND OFF

- To activate the wake up alarm, press ⬆️. A bell symbol appears on the display.
- To deactivate the alarm, press ⬇️. The bell symbol disappears.

NOTICE
Ex factory, the alarm clock function is not enabled. But it can be unlocked by the physician or dealer with TRENDset PC software.

SETTING THE WAKE UP TIME

1. Press the enter key ⬅️ for 1 second.
2. Use the selection keys ⬆️ and ⬇️ to select **Wake Time**.
3. Press the enter key ⬅️.
4. Use the selection keys ⬆️ and ⬇️ to set the time.
5. Confirm each setting by pressing the enter key ⬅️.